

Diesel Fuel Filters OE

The **GM OE** Diesel fuel filter is **vital to the performance** of the latest GM diesel engines in the vehicle applications listed below. The OE fuel filter **helps prevent damage** to the engine and/or fuel injection system caused by foreign particles, corrosion, cavitation and formation of micro organisms.

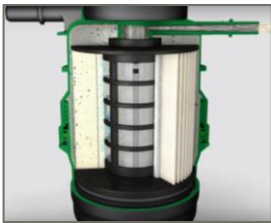
Pure fuel is essential for efficient combustion and determines the service life of many components in the fuel injection system. The **GM OE** diesel fuel filter removes dirt particles and water as separate functions from the fuel.

Model	Model Year	Duramax Engine	Engine RPO
Cruze	2014-2015	2.0L I4 Turbo	LUZ
Cruze	2017-2019	1.6L I4 Turbo	LH7
Silverado/Sierra1500	2020	3.0L I6 Turbo	LM2
Silverado/Sierra 2500HD, 3500HD	2017-2020	6.6L V8 Turbo	L5P

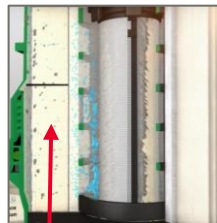
Fuel Filter with Water Separator



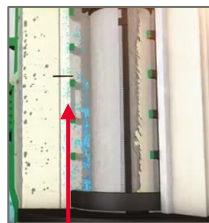
**Part # 23149526
TP-1014**



Highly efficient 3-stage fuel filter



Stage 1 - Separation of particles - Retains Dirt



Stage 2 - Water droplets coalesce and enlarge



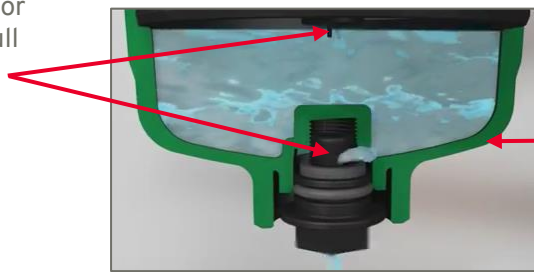
Stage 3 - Hydrophobic barrier separates water

Filter Element & Seals Only



**Part # 23304096
TP-1015**

Sensor in the water separator bowl signals when bowl is full for water to drain.



IMPORTANT: Clean the water separator bowl in model year 2017 & forward applications **BEFORE** installing replacement cartridge. Any debris that is left or consequently enters the bowl will be directly passed to the sensitive fuel injection system

OE DESIGNED
installed during production

ENGINEERED
for your GM vehicle

TESTED
to rigorous standards

GM-BACKED
limited warranty

Our most common Parts Warranty offers coverage on the majority of our Genuine GM Parts and ACDelco service replacement parts. Effective on parts purchased April 1, 2018 and later to the original retail purchaser. Contact seller for limited warranty part details, qualifications, and possible labor coverage.



47-SS-0386-20CL